

Prüfbericht - Nr.: 113081981

Test Report No.:

Seite 1 von 7

Page 1 of 7

Auftraggeber:

Geyoung Corp.

Client:

Rm. 5D-05, No.5, Xin Yi Road,Sec.5, Taipei 11011,Taiwan.

Gegenstand der Prüfung: Multi-Function LED Tag Light

Test Item:

Bezeichnung:

Multi-Function LED Tag Light / CCT-02

Identification:

Anlieferungszustand:

apparent good

Eingangsdatum:

03.08.2006

Delivery condition:

Date of Receipt:

Prüfört:

Nankang Branch, Taipei

Testing location:

Prüfgrundlage:

Directive 2002/95/EC last amended by 2006/310/ EC : Restriction of the Use of Certain Hazardous Substances (RoHS):

Test specification:

Total Content of Lead, Cadmium, Mercury, Chromium VI, Polybrominated Biphenyls, Polybrominated Diphenyl Ethers

Prüfergebnis:

Pass - based on the randomly performed spot-tests as shown in this report, the submitted sample complies with the requirements of the above mentioned directives.

Test result:

geprüft/ tested by:

kontrolliert/ checked by:

11.09.2006 Mike Lee
/Reviewer

11.09.2006 Dr. Chi-Peng Chang
/Reviewer

Datum Name Unterschrift
Date Name Signature

Datum Name Unterschrift
Date Name Signature

Sonstiges/ Other Aspects:

Test period: 03.08.2006 – 11.09.2006

Abkürzungen: ok / P = entspricht Prüfgrundlage
fail / F = entspricht nicht Prüfgrundlage
n.a. / N = nicht anwendbar

Abbreviations: ok / P = passed
fail / F = failed
n.a. / N = not applicable

Dieser Prüfbericht bezieht sich nur auf das o.g. Prüfmuster und darf ohne Genehmigung der Prüfstelle nicht auszugsweise vervielfältigt werden. Dieser Bericht berechtigt nicht zur Verwendung eines Prüfzeichens.

This test report relates to the a. m. test sample. Without permission of the test center this test report is not permitted to be duplicated in extracts. This test report does not entitle to carry any safety mark on this or similar products.

DRAFT




Produktsicherheit und -qualität
Product Safety and Quality

TÜV Rheinland Group

Test Report No. : 113081981
Customer : Geyoung Corp.

11.09.2006

Sample List:

Part No.	Picture	Description:	ID / Model No.:	Lab.-No.:
A		Multi-Function LED Tag light	CCT-02	TCL060803-07R

Sample No.	Picture	Part No.	Component	Material	Color
1		A	housing	plastic	black
2		A	housing	plastic	black
3		A	button	plastic	black
4		A	lamp	plastic	clear
5		A	PCB	plastic	green
6		A	Component	metal	metallic
7		A	conductive part	metal	metallic
8		A	cell holder	metal	metallic

Test Report No. : 113081981 11.09.2006
Customer : Geyoung Corp.
Test Method : XRF – Screening, measurement time 100 s ~400s
Instrument: Energy dispersive X-ray fluorescence spectrometer Horiba XGT-5000WR

1st Action: XRF-Screening

Sample No.		LoQ	1	2	3	4
Cadmium (Cd)	mg/kg	20	n.d.	n.d.	n.d.	n.d.
Lead (Pb)	mg/kg	30	n.d.	n.d.	n.d.	n.d.
Mercury (Hg)	mg/kg	5	n.d.	n.d.	n.d.	n.d.
Chromium (Cr)	mg/kg	10	n.d.	n.d.	n.d.	n.d.
Bromine (Br)	mg/kg	10	> 350	> 350	> 350	> 350

Sample No.		LoQ	5
Cadmium (Cd)	mg/kg	20	n.d.
Lead (Pb)	mg/kg	30	n.d.
Mercury (Hg)	mg/kg	5	n.d.
Chromium (Cr)	mg/kg	10	n.d.
Bromine (Br)	mg/kg	10	15

Notes:

- LoQ : Limit of Quantification
- n.d. : not detected
- n.a. : not applicable
- ED-XRF instrument: Energy dispersive X-ray fluorescence spectrometer Horiba XGT-5000
XRF Screening: measurement time 100 s
XRF Mapping: resolution 10 µm

Test Report No.	: 113081981	11.09.2006
Customer	: Geyoung Corp.	
Test Method	: Lead, Cadmium	- Following US EPA 3052; determination by ICP-OES
	Mercury	- Gold-amalgam enrichment, determination by cold AAS
	Chromium VI	- Following DIN EN 3613; determination by UV/Vis
	PBB/PBDE	- Following US EPA 8270C; determination by GC/MS

2nd Action: Confirmation-Analysis

Sample No.		LoQ	1	2	3	4
Cadmium (Cd)	mg/kg	2	- ¹⁾	- ¹⁾	- ¹⁾	- ¹⁾
Lead (Pb)	mg/kg	2	- ¹⁾	- ¹⁾	- ¹⁾	- ¹⁾
Mercury (Hg)	mg/kg	2	- ¹⁾	- ¹⁾	- ¹⁾	- ¹⁾
Chromium VI (Cr VI)	mg/kg	1	- ¹⁾	- ¹⁾	- ¹⁾	- ¹⁾
PBBs	mg/kg	10	n.d.	n.d.	n.d.	n.d.
PBDE excluding DeBDE	mg/kg	10	n.d.	n.d.	n.d.	n.d.

Sample No.		LoQ	5	6	7	8
Cadmium (Cd)	mg/kg	2	- ¹⁾	n.d.	n.d.	n.d.
Lead (Pb)	mg/kg	2	- ¹⁾	32	83	14
Mercury (Hg)	mg/kg	2	- ¹⁾	n.d.	n.d.	n.d.
Chromium VI (Cr VI)	mg/kg	1	- ¹⁾	n.d.	n.d.	n.d.
PBBs	mg/kg	10	- ¹⁾	n.a.	n.a.	n.a.
PBDE excluding DeBDE	mg/kg	10	- ¹⁾	n.a.	n.a.	n.a.

Notes:

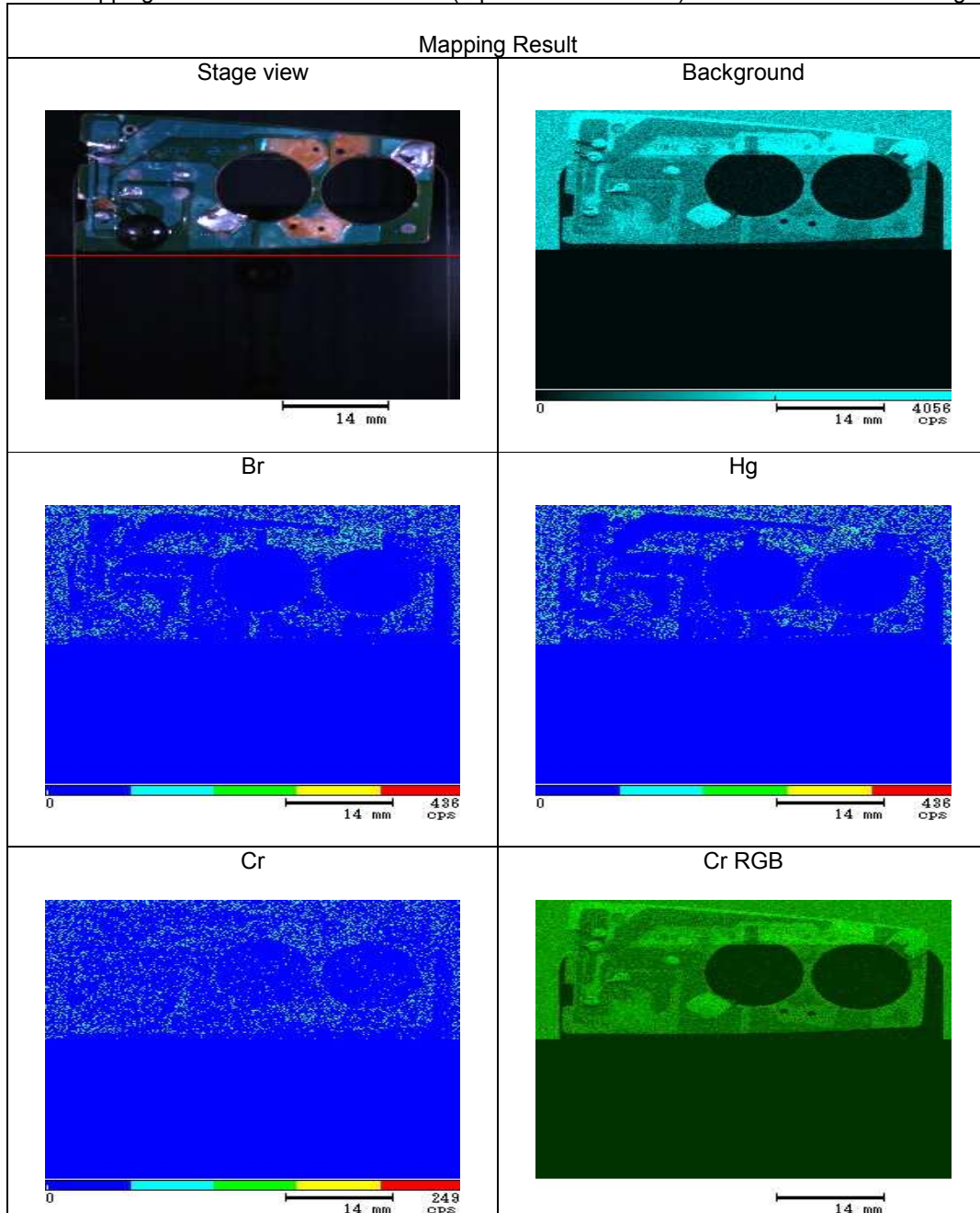
- n.d. - not detected
- n.a. - not applicable
- LoQ - Limit of Quantification
- mg/kg is equal to ppm (parts per million)
- Analysis of PBB/PBDE includes the following compounds (BZ#):
 Brominated Biphenyls: 3, 15, 29, 77, 103, 153, 209
 Brominated Diphenyl Ethers: 3, 15, 28, 47, 99, 154, 183, 203, 206, 209
- ¹⁾ : Test covered by 1st action procedure

Test Report No. : 113081981
Customer : Geyoung Corp.

11.09.2006

XRF-Screening

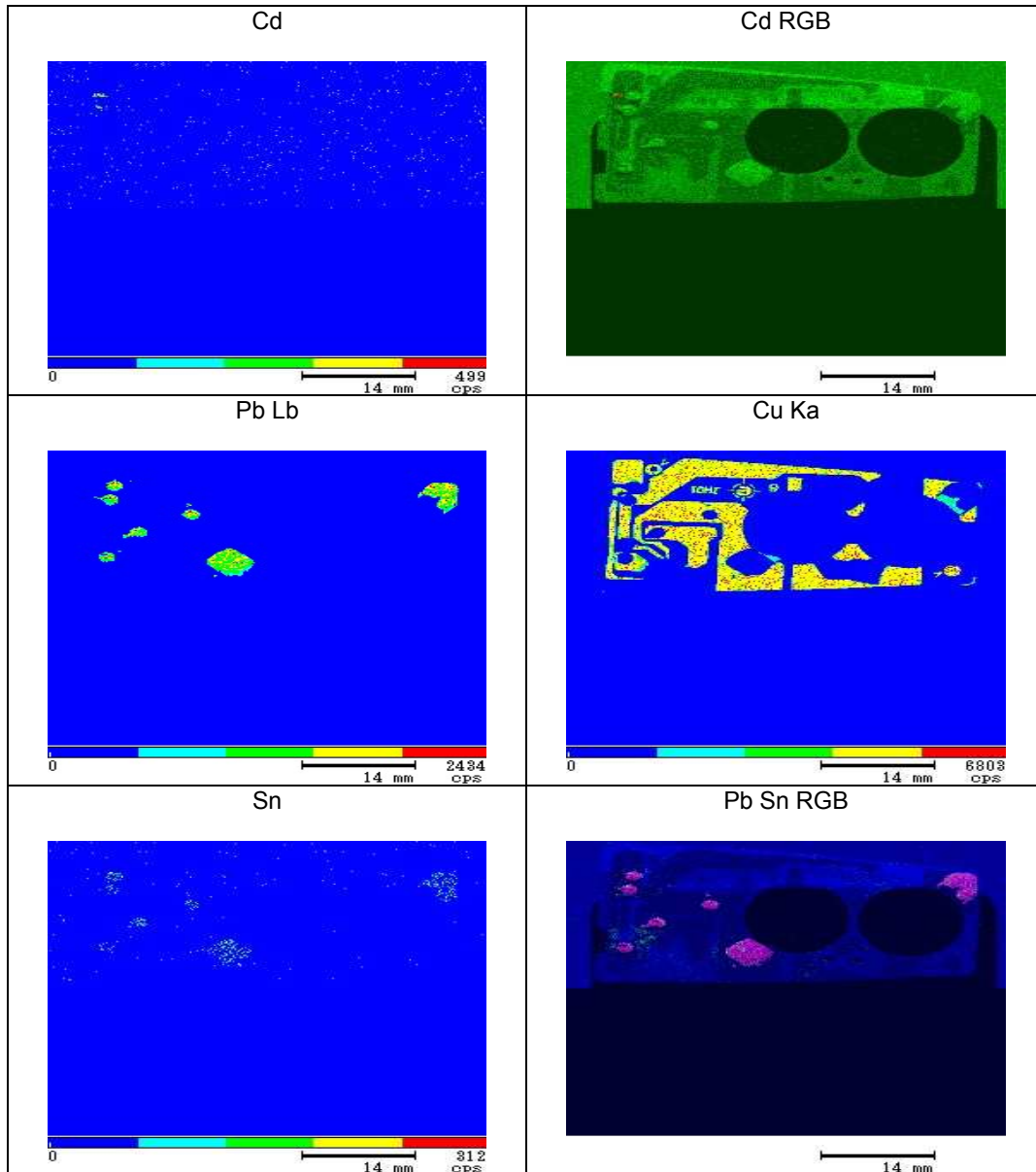
The mapping test results of the main PCB (report# 113081981#5) for Multi-Function LED Tag Light CCT-02



DRAFT

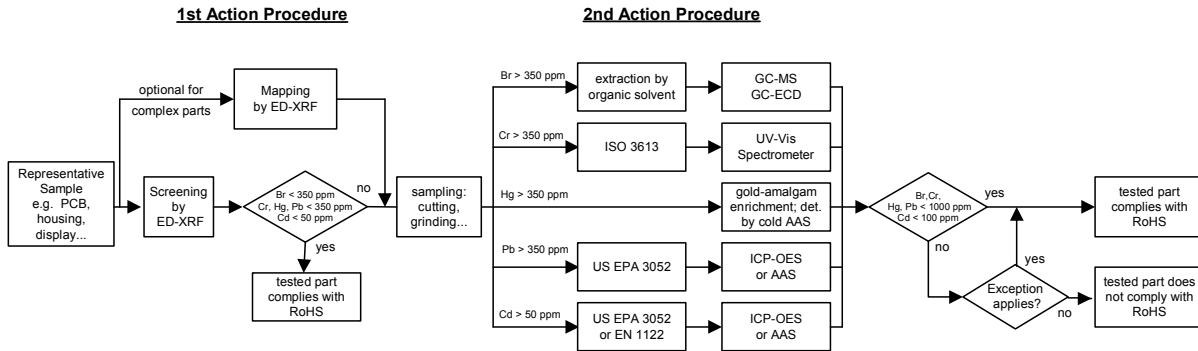
Test Report No. : 113081981
Customer : Geyoung Corp.

11.09.2006



Test Report No. : 113081981
Customer : Geyoung Corp.

11.09.2006



--- End of Test-Report ---